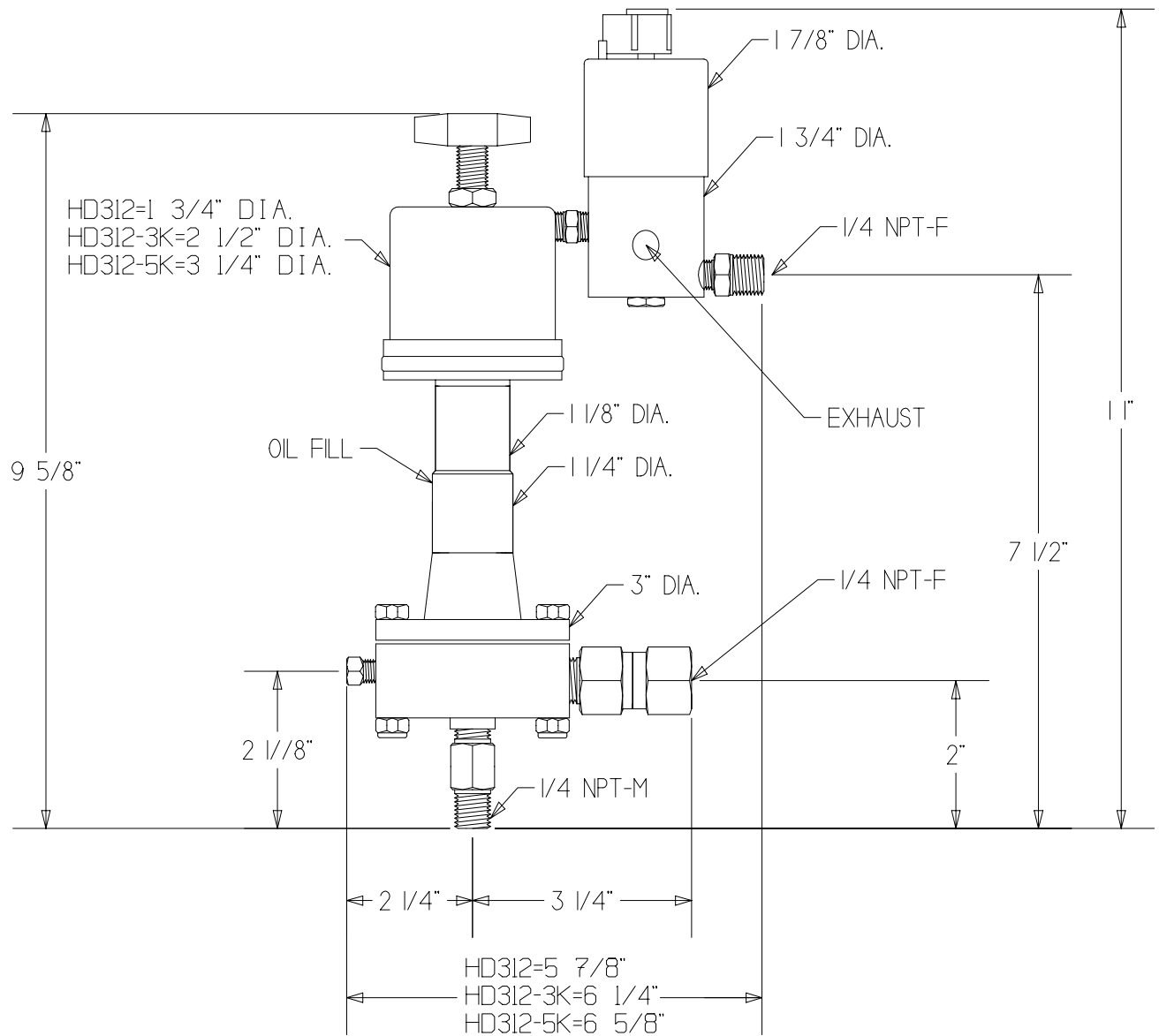


MORGAN PRODUCTS

PNEUMATIC CHEMICAL PUMPS FOR THE GAS AND OIL INDUSTRIES

MODEL HD312 / HD312-3K / HD312-5K

AIR ACTUATED HYDRAULIC DIAPHRAGM PUMP



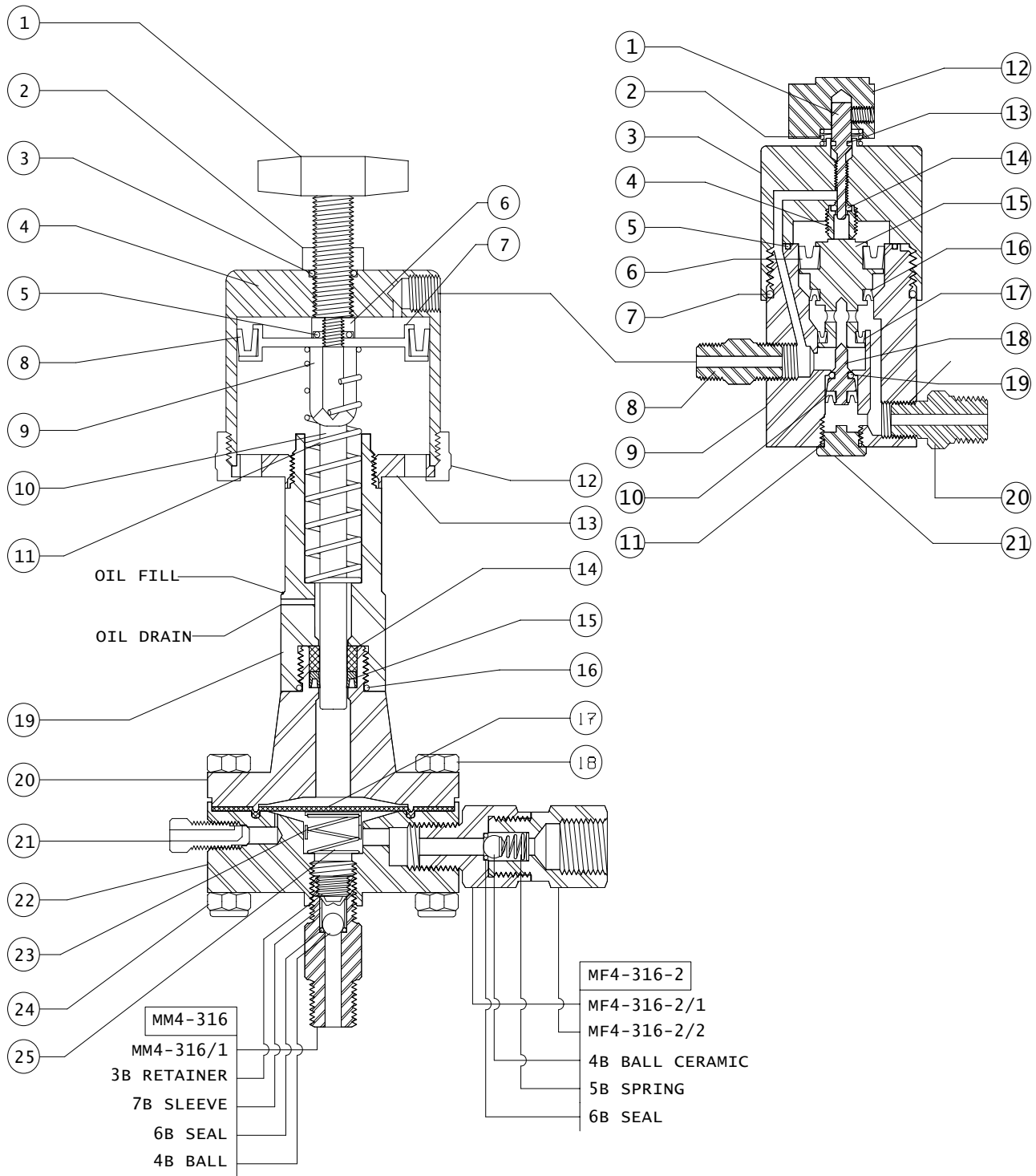
MODEL (WITH TIMER)	DISPLACEMENT	PUMP RATIO	STROKE LENGTH in. - cm.	CONNECTIONS ALL NPT INPUT / OUTPUT	MAXIMUM DISCHARGE PSI - BAR	OUTPUT PER HOUR GAL. / LTS.
HD312-TR2	1 cc	10:1	1 - 2.5	1/4 - M / 1/4 - F	1000 - 68.9	.06 - .63 / .24 - 2.4
HD312-3K-TR2	1 cc	30:1	1 - 2.5	1/4 - M / 1/4 - F	3000 - 207	.06 - .63 / .24 - 2.4
HD312-K5-TR2	1 cc	50:1	1 - 2.5	1/4 - M / 1/4 - F	5000 - 345	.06 - .63 / .24 - 2.4

MORGAN PRODUCTS INC. 28103 Ave. Stanford / Valencia, CA 91355

(661) 257-3022 - (800) 421-8910 - FAX (661) 257-3385

Web www.morganproducts.com - E-Mail info@morganproducts.com

HD312-TR2 / HD312-3K-TR2 / HD312-5K-TR2



To order check valve parts, use check valve designation & dash number.
 EXAMPLE: Ball for MF4-316-2 Order MF4-316-2/4

Keep all rubber goods lubricated with Morgan Products grease or equivalent.

**MODEL HD312 / HD312-3K / HD312-5K
PARTS LIST**

NO	NAME	PART NO.	MODEL
1	Stroke Adjuster	HD312-1	ALL
2	Locknut	100-2	ALL
3	O-Ring Seal	100-3 *	ALL
4	Air Chambers	100-4 200-4 300-4	HD312 HD312-3K HD312-5K
5	O-Ring Seal	100-11 *	ALL
6	Piston Locknut	100-7	ALL
7	Pistons	100-8 200-8 300-8	HD312 HD312-3K HD312-5K
8	Piston Seals	100-9 * 200-9 * 300-9 *	HD312 HD312-3K HD312-5K
9	Spring Guide	HD312-10	HD312-3K, 5K
10	Plunger	HD312-15 *	ALL
11	Return Spring	100-13 * 200-13	HD312 HD312-3K, 5K
12	Air Chamber Rings	100-5 200-5 300-5	HD312 HD312-3K HD312-5K
13	Faceplates	200-6 300-6	HD312-3K HD312-5K
14	Back Up Ring	HD312-19 * +	ALL
15	Pressure Seal	HD312-20 * +	ALL
16	O-Ring Seal	50-21 *	ALL
17	Diaphragm	HD312-32 *	ALL
18	Chamber Bolt	D40-PVC-10 (8) HD-5K-36	HD312, HD312-3K HD312-5K
19	Oiler Housings	HD312-14 HD312-3K-14	HD312 HD312-3K, 5K
20	Hydraulic Chamber	HD312-29	ALL
21	Bleeder	125-22	ALL
22	Pressure Chamber	HD312-23	ALL
23	Spring Cup	HD312-35	ALL
24	Locknut	D40-9 (8) HD-5K-37	HD312, HD312-3K HD312-5K
25	Diaphragm Spring	HD312-36 *	ALL
	1oz. Grease	*	ALL
	1oz. Oil	HD187-24 *	ALL

* = Included in Repair Kit

+ = Included in Seal Set

REPAIR KITS AND SEAL SET

PART NO.	DESCRIPTION	MODEL
HD312-50	REPAIR KIT	HD312
HD312-3K-50	REPAIR KIT	HD312-3K
HD312-5K-50	REPAIR KIT	HD312-5K
HD312-48	SEAL SET	ALL
TR2-50	REPAIR KIT	TR2

**MODEL TR2
PARTS LIST**

NO	NAME	PART NO.	MATERIAL
1	Metering Valve	TR2-3	303 SS
2	Knob Spring	TR2-2	302 SS
3	Upper Body	TR2-5	303 SS
4	Metering Seat	TR2-6	18-8 SS
5	O-Ring	TR2-13 *	BUNA-N
6	Upper Seal	TR2-10 *	VITON
7	O-Ring	TR2-14 *	BUNA-N
8	1/8" NPT Nipple	TR2-22	303 SS
9	Lower Body	TR2-8	303 SS
10	Poppet Seal	TR2-17 *	VITON
11	Plug Seal	TR2-18 *	BUNA-N
12	Knob	TR2-1	PLASTIC
13	O-Ring	TR2-4 *	BUNA-N
14	Teflon Seal	TR2-7 *	TEFLON
15	Piston	TR2-9	NYLON
16	Middle Seal	TR2-11 *	VITON
17	Lower Seal	TR2-12 *	VITON
18	Poppet	TR2-15	PVC
19	Poppet O-Ring	TR2-16 *	VITON
20	1/8 x 1/4 NPT Nipple	TR2-21	303 SS
21	Plug	TR2-19	303 SS
	1oz. Grease	*	

* = Included in Repair Kit

**MATERIAL SPECIFICATIONS
HD312 / HD312-3K / HD312-5K**

NAME	STANDARD	OPTION
Stroke Adjuster	18-8 SS & ABS	
Locknut	18-8 SS	
O-Ring Seals	Buna - N	Viton
Piston Seals	Buna - N	Viton
Plunger	17-4 SS	
Return Spring	Teflon Coated Inconel	
Back Up Ring	PVC	
Pressure Seal	Graphite Filled Teflon	
Diaphragm	Teflon Faced Buna-N	
Chamber Bolt	18-8 SS	
Bleeder	316 SS	
Pressure Chamber	316 SS	
Spring Cup	316 SS	
Diaphragm Spring	Inconel	
Check Valve Bodies	316 SS	
Check Valve Seals	Teflon	
Check Valve Balls	Ceramic	
Check Valve Springs	Inconel	

**AIR / GAS USAGE
SCF/DAY AT 1 STROKE PER MINUTE**

MODEL	25 psi	50 psi	75 psi	100 psi	125psi	150 psi
HD312	3.9	6.4	8.9	11.3	13.8	16.2
HD312-3K	8.9	14.4	19.9	25.5	31.0	36.5
HD312-5K	15.7	25.6	35.4	45.3	55.1	64.9

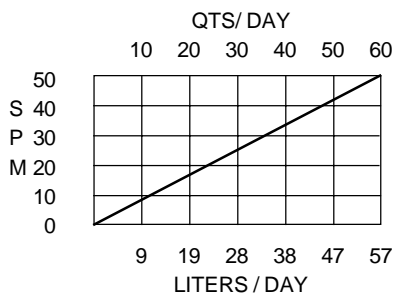
Table constant multiplied by stroke rate = SCFD
 Example: HD312 (operated at 50 psi) Multiply 6.4 by 20 SPM = 128 SCFD

INSTALLATION INSTRUCTIONS

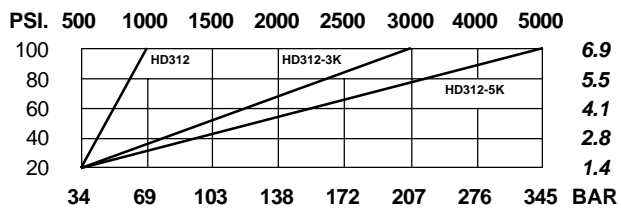
1. Discard all red plastic closures.
2. Connect suction check valve, to a gravity fed chemical source.
3. Connect discharge check valve, to process line.
4. Connect a regulated air or gas supply, to the timing relay.
5. Fill oil reservoir with oil provided, until oil flows out of the bleed hole.
 ** This must be done BEFORE start up.**
6. Open bleeder valve until chemical flows from bleeder.
7. Set regulator at 10 to 15 psi ABOVE the pressure required.
 (See Discharge pressure graph.)
8. Set cycle rate in strokes per minute.
 (See volume graph)

CAUTION: Use only light hydraulic oil.

VOLUME



DISCHARGE PRESSURE



MORGAN PRODUCTS INC. 28103 Ave. Stanford / Valencia, CA 91355

(661) 257-3022 - (800) 421-8910 - FAX (661) 257-3385

Web www.morganproducts.com - E-Mail info@morganproducts.com